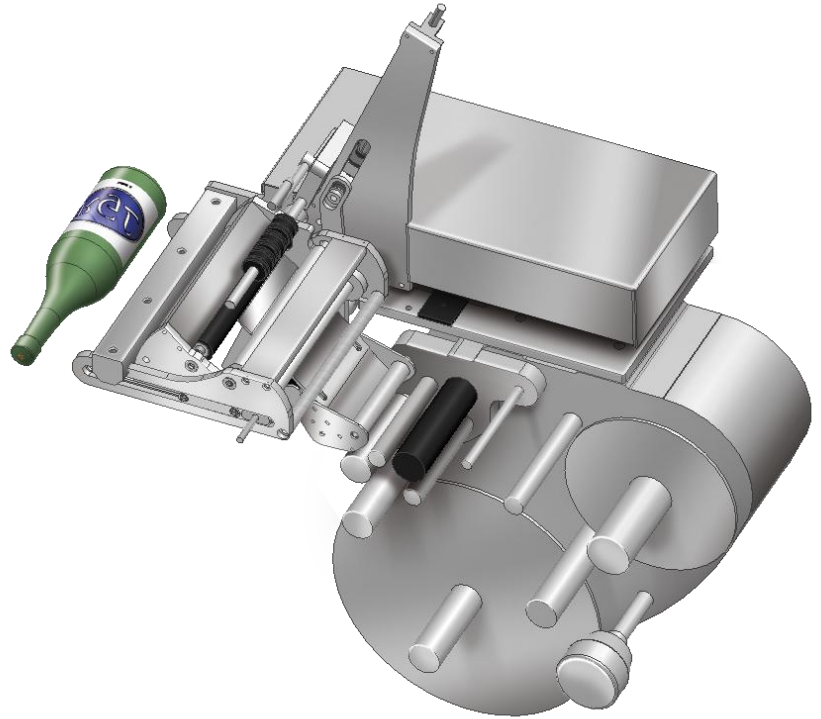


Semi Automatic Labeller



The RGL Semi-Automatic has been designed to apply front & back and medallion labels onto cylindrical products at very high production rates without the need for a conveying system making it ideally suited for labelling glass and plastic bottles for the wine, beverage, and pharmaceutical industries.

Flexible

The semi-automatic labeller can apply the front, back, front & back or medallion labels in a single cycle. With integrated product banks, batch labelling of many different products is simple and easy.

Because the system labels from underneath the adaption for different product sizes is extremely easy making this one of the most flexible semi automatic labelling systems.

Fast

The Bottle Labelling attachment bridges the power of the Avery Dennison ALS204 label applicator which means that very fast rotational speeds are possible.

With the optional auto-eject mechanism fitted this incredible cycle time can be taken full advantage of by having two people work in tandem, one loading, one packing for very high production throughput.

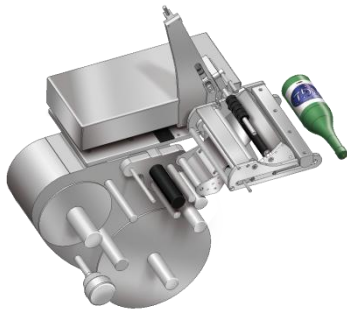
Future Proofed

If your production output grows to the point where an in-line labelling system would make greater economic sense you can trade-in the bottle labelling attachment against an RGL Bottle Labelling system.

The Avery Dennison ALS204 is a fully featured label applicator that becomes the engine room for your new in-line labeller with your initial investment realised for a second time!



Semi Automatic Labeller Specifications



Performance

Bottle diameter range	30-200mm
Bottle height range	50-350mm
Label advance velocity (max)	40m/min
Labels per cycle	1 or 2
Label accuracy	+/- 0.5mm
Label orientation	Yes, with optional sensor.

General Features

Label material	Self Adhesive Labels with Liner
Label width	30mm to 150mm
Label length	5mm to 600mm
Label roll diameter (max)	300mm
Label roll core sizes	38mm, 76mm or 101mm
Label windings	Inside or Outside
Label unwind type	Dancer arm controlled precision release
Label rewind type	Dancer arm controlled motor rewind
Label brake	Calliper
Counters	Cycle and Label
Missing label compensation	Yes
Automatic label calibration	Yes

Programming Features

Labeller applicator interface	5 Key with 2 Line Display
Product banks	15

Options

Automatic ejector
 Ejection chute
 Label orientation photo sensor
 Three stage alarm beacon
 Low label sensor
 Second operator display
 Mobile stainless steel with height adjust
 Mobile aluminium frame

Physical Characteristics

Dimensions	900mm x 700mm x 560mm
Weight	43kg
Power	110v-240v 50/60Hz
Requires factory air	No
IP protection (ALS204 Label Applicator)	IP41 (optional IP65)
Regulatory approvals (ALS204 Applicator)	CE, C-Tick, TUV, FCC, CCC, GOST
Noise	<70dB (A)

Environment

Operating temperature	5-40°C
Humidity	30 – 85%, non-condensing



Reynolds Group

4 Henderson Place, Onehunga
 Auckland, New Zealand

Telephone +64 (09) 622 3500
 Fax +64 (09) 622 3500
 Email sales@rgl.co.nz
 Website www.rgl.co.nz